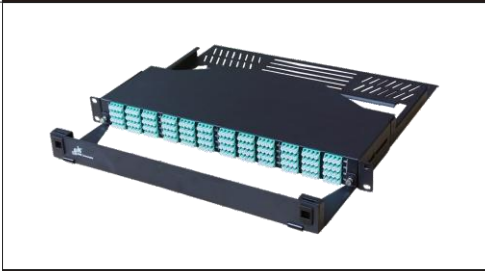


MTP/MPO bevel Patch Panel-SP4

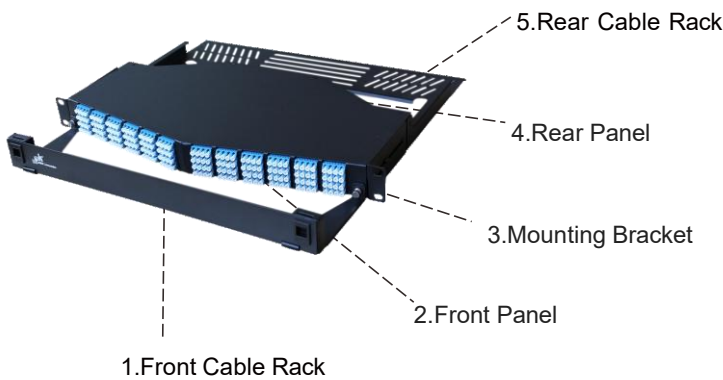
Features	Application
<ul style="list-style-type: none"> ● 1U height can accommodate up to 192 core fibers ● The Patch Panel structure includes right angle structure and bevel structure ● Suitable for 19" standard cabinet ● Body made of cold-rolled steel 	<ul style="list-style-type: none"> ● Data communication applications ● Data Centre infrastructure ● Fiber Channel ● 40G upgrade to 100G



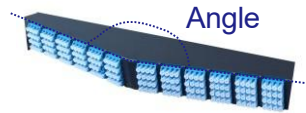
SP4A-1U(bevel)



SP4-1U(Flat)



1. Tool-free installation and easy disassembly



2. The front panel is beveled so that the optical cable has the best transmission line



3. Mounting Bracket can be adjusted forward or backward



4. Up to 16 MTP/MPO connectors can be installed

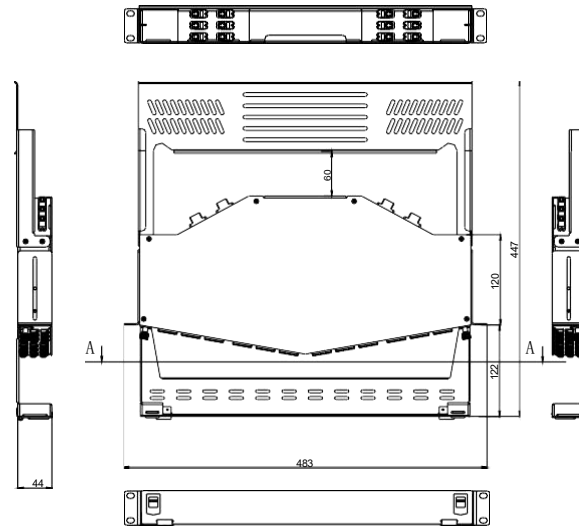


5. The rear cable management rack can manage optical cables from both sides

Specification

ITEM	CHARACTERISTICS
Operation Temperature	-10°C~+60°C
Storage Temperature	-20°C~+60°C
Relative Humidity	≤85%(+30 °C)
Air Pressure	70kPa~106kPa
Dimensions (W x D x H)	483mm×454mm×1U

Drwaing structure



Optical Performance

Type	Wavelength	I.L. Typ.	I.L. Max	R.L.Min
MTP-LC(MM)	850nm/1300nm	0.25dB	0.35dB	30dB
MTP-LC(SM)	1310nm/1550nm	0.25dB	0.35dB	50dB
MPO-LC(MM)	850nm/1300nm	/	0.60dB	20dB
MPO-LC(SM)	1310nm/1550nm	/	0.75dB	50dB

Accessories

1	User guide	1PC
2	Nylon cable ties	4PCS
3	M6 Rack screws and nuts	4PCS
4	Lable	1PC
5	Magic sticks	1Meter

Ordering Information

SP4	SP	B	9004	16X12	MTP/PC	LC/UPC	OM3	1U
1	2	3	4	5	6	7	8	9

- 1 - Model SP4
- 2 - Body Materials SP: SPCC(Cold rolled steel plate)
- 3 - Surface Spraying B: Fine sand pattern
- 4 - Spray Color 9004: RAL9004 black
- 5 - Patch Cord Quantity 16×12 : 16pcs of 12F; 8×24: 12pcs of 24F;
- 6 - Connector A MPO/PC; MPO/APC; MTP/PC; MTP/APC
- 7 - Connector B LC/UPC; LC/APC
- 8 - Fiber Mode G657A1; OM1; OM2; OM3; OM4; OM5
- 9 - Panel Height 1U

Note:1.SP4-1U fully equipped with 192F.

2.Empty patch panel product description without adapter:MP4-SP-B-9004-EM-1U.



Shenzhen Spring Optical Communication Co.,Ltd
Add: 1611, Building A, Zhongan Science And Technology Park, Longhua District, Shenzhen, Guangdong, China
mail: sales@springoptic.com
Web: www.springoptical.com